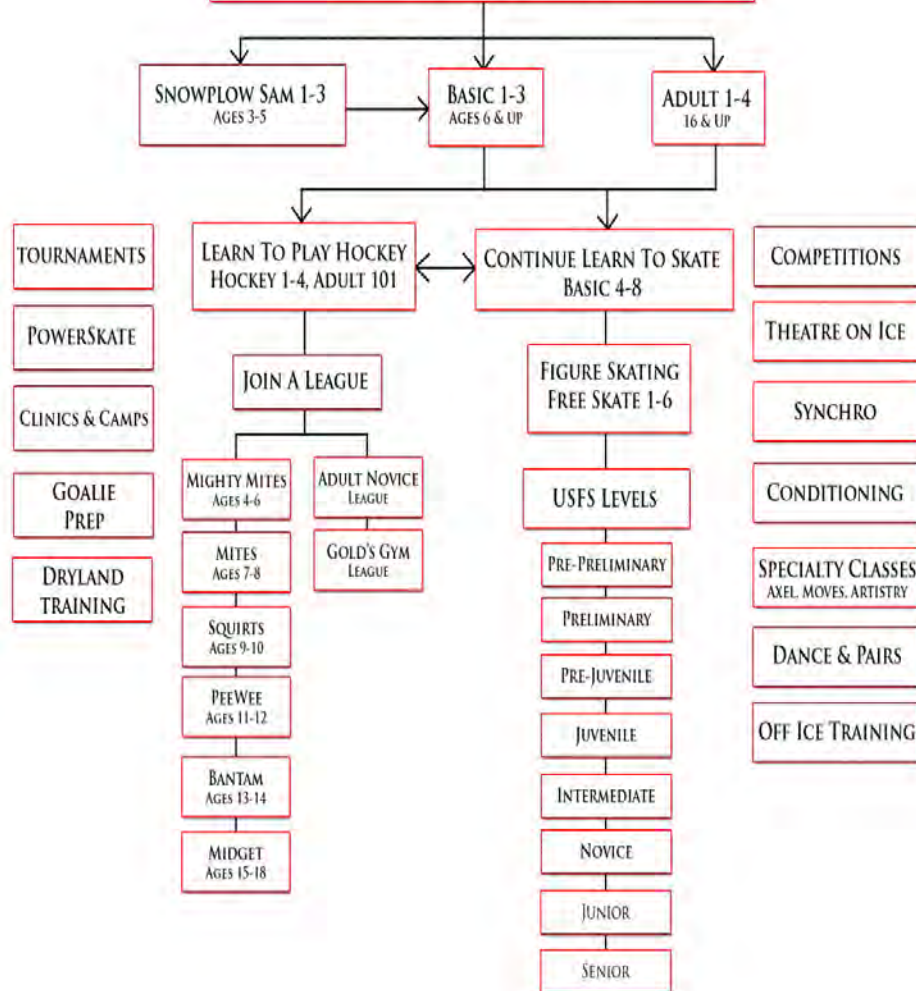


ARCTIC WOLF ICE CENTER
LEARN TO SKATE
 BASIC SKILLS PROGRAM



Determination

To fill your lungs with cold air, to etch your trail in fresh ice, to hit the ice and stand up again, to compete and win or lose with pride, to be stronger every day, to chase what you've been dreaming of.
 On behalf of budding figure skaters and hockey players and in hopes of closer families, stronger communities and tighter teams— we thank you

Arctic Wolf Ice Center offers unparalleled Figure and Hockey developmental programs in which skaters may enjoy a variety of classes for beginners through advanced levels. We have a qualified Professional Coaching Staff. Each coach is a member of at least one of the following organizations recognized worldwide: Ice Skating Institute (ISI), US Figure Skating, US Figure Skating Basic Skills, Professional Skater's Association (PSA), and/or United States of America Hockey Association (USA Hockey)

Aren Jonasson, Hockey Director, 979-693-3900 or arenj@arcticwolfice.com

Learn to Play Hockey

Group Lessons

January 8 - March 5, 2012

Session 1: 9 Weeks

Registration opens December 10th, 2011!



Join US in the FUN!

Learn to Play Hockey classes are for children and adults that have passed Basic 3 or Adult 2 in the Learn to Skate School. This program will teach the fundamental hockey skills needed to play in a league.

We strongly recommend that skaters are co-enrolled in skating classes while they are learning to play hockey.

**Full equipment is recommended.
 Helmet, Gloves, and Stick Required**

Session 1: January 8 - March 5, 2012

Session 2: March 18 - April 30, 2012

Session 3: May 6 - June 25, 2012

**All dates and times are subject to change*

For a complete listing of public session times call 979-693-3900, for additional class information, contact the Hockey office at 979-693-3900 ext. 102

**Arctic Wolf Ice Center * 400 Holleman Drive East * College Station, TX 77840
 www.arcticwolfice.com * 979-693-3900**

Class Schedule

Class	Sunday	Monday
Hockey 1 - 4	5:45 - 6:15pm	5:45 - 6:15pm
Adult Hockey 101	5:45 - 6:15pm	5:45 - 6:15pm
Power Skating	—	6:30 - 7:00pm
Mighty Mites	5:45 - 6:30pm	—

Supplement group classes with private lessons to hone in on skills and get ahead. Talk to your group class Instructor for more information.

Class Descriptions

Hockey Curriculum

Hockey 1

Introduces players into the sport of hockey. Forehand & Backhand pass. Wrist shot and backhand wrist shot. Lateral dribble, forehand-backhand dribble, diagonal dribble, toe drag.

Hockey 2

Saucer pass, Indirect pass, receive pass with skate. Rebound shots, advancing wrist shot and backhand wrist shot. Dribble with feet, soft touch, change of pace, and puck protection. Poke check.

Hockey 3

Flip pass, backhand pass, receiving pass with glove. Snap shot, Dekes, fake shot, tipping. Dribble around the body, tight and away, off boards, and with one hand on stick. Hook check, sweep check, hit the stick check.

Hockey 4

One-touch pass, drop pass, blind pass. Slap shot, one-timer, advancing Dekes. Dribble through legs, hand slide wide, push pull, figure 8. Stick press check and lift the stick check.

Adult Hockey 101

Incorporates skills learned in Hockey 1-4 in a less intensive environment.

Power Skating

Development of proper skating technique, balance, and edge control, with an emphasis on power and agility. Full gear recommended. Helmet, Gloves, and stick required.

Mighty Mites

For Ages 3-8. Entry level league practice for players who have completed Hockey 2 or concurrently enrolled in LTPH classes. Full gear required. Emphasis on FUN while learning.

Class Details

- Hockey Classes last 30 minutes. Mighty Mites last 45 minutes.
- Levels may be combined if it doesn't meet the 3 student minimum.
- All classes and make-ups must be **completed by the end of the session**. No exceptions.
- The lessons purchased **do not carry over to future sessions**.
- The session is 9 weeks with 9 lessons. Save even more by purchasing additional 9 lesson packages. This includes Learn to Skate Classes.
- Full equipment is recommended. Helmet, gloves, and stick required.

Full Equipment is...

- | | |
|---|---------------------|
| • Shin Pads | • Hockey Socks |
| • Elbow Pads | • Tape |
| • Shoulder Pads | • Helmet cage combo |
| • Gloves | • Stick |
| • Pants | • Mouth Guard |
| • Jock/Garter Belt/
Compression Shorts | • Practice Jersey |

Hockey Academy Benefits

All benefits expire on the last day of the session.

- Nine group skating lessons
- Skate rental included for classes and practice
- Unlimited \$6.00 + tax public skating sessions & Skater Reward Card
- 10% re-enrollment discount for consecutive session
- 10% off all pro shop merchandise
- Make up privileges for missed classes

Prices

30 Min Class Mighty Mites

9 lesson package	\$ 145	\$ 160
9 lesson Re-enrollment package	10% discount*	10% Discount*
2nd or more 9 lesson package (Includes Learn to Skate Classes)	50% discount*	50% Discount*
Price Per Lesson	\$ 17.50	\$ 20.00

Discounts

- 10% Re-Enrollment Discount – for consecutive sessions only & when enrolling in all 9 lessons
- 10% Second Family Member Discount
- 50% Additional 9 lesson packages discount - must have purchased first 9 lesson package (must be the same skater)
- 15% Bookkeeping Fee on all refunds
- **Discounts may not be combined.***
- League players will receive 50% off classes.